



PRODUCT	Xplus100
HARDWARE	Flash Voicemail and KSU
SOFTWARE	370CE29K
DESCRIPTION	<b>Setting up One Touch Record using Hyper Terminal</b>

SET UP:

- Connect the Voicemail to a laptop or PC with a 9-pin male to female serial cable using Hyper Terminal
- Access menu option (12) PBX Integration Screen
- Change SilentRcd to **9XMMM**
- Access the Xplus100 KSU database administration
- Setup CO Line Call Abandon

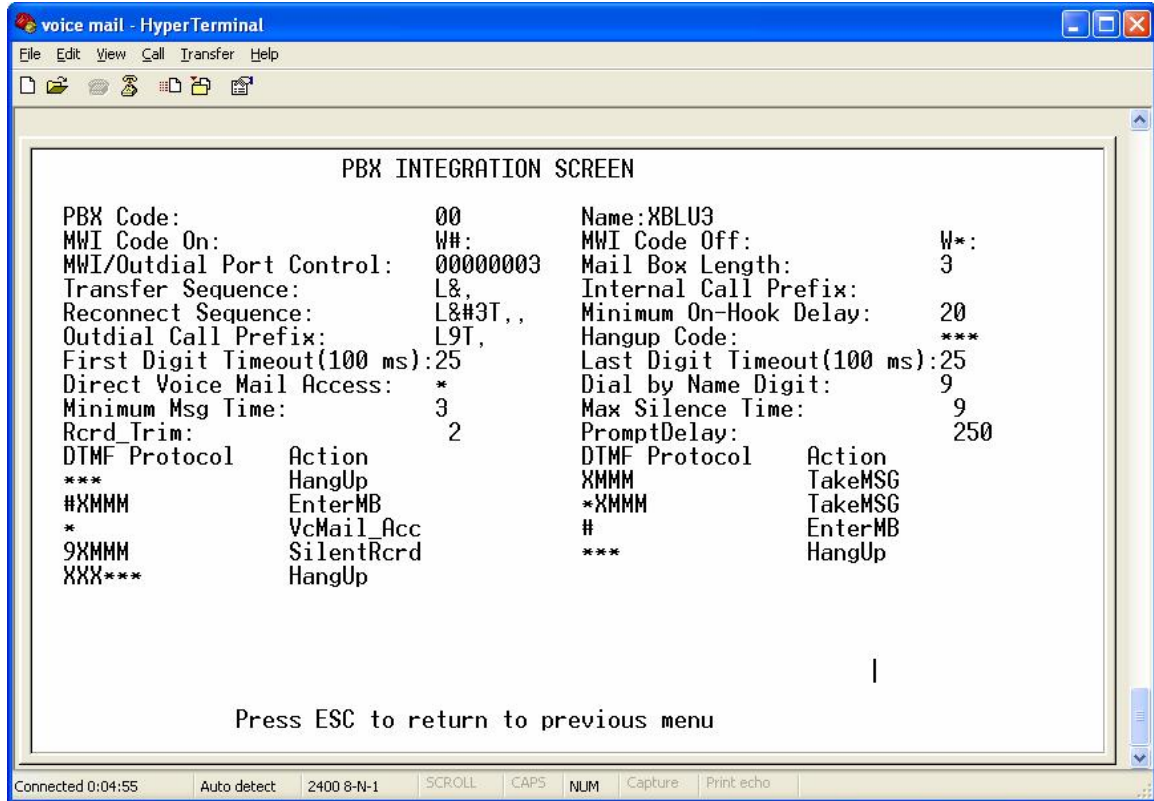
Hyper Terminal PROGRAMMING:

steps:

- 1 Select *Start* → *Programs* → *Accessories* → *Communications* → *Hyper Terminal*
- 2 Setup a new connection using the following settings:
  - a. Select the correct COM port, as required by your PC, then press OK.
  - b. On the Comport Settings screen, set 2400, N 8 1, Flow Control to XON, XOFF
  - c. Click OK.
  - d. Click on *File* → *Properties*, and then select the *Settings* tab.
  - e. Select *Auto Detect* as the emulation.
  - f. Click on the ASCII setup button and uncheck the “*Wrap lines that exceed terminal width*” option.
  - g. Click OK, and then click OK again.
- 3 The Hyper Terminal connection is now configured properly for programming the Xplus100 Flash Voice Mail System.
- 4 Press Escape to access the Main Programming Menu.
- 5 At the Enter Password Screen enter the password, (the default password is 0000) press Enter to access the Programming Main Menu window.
- 6 Select 12- *PBX Integration*, and press Enter.
- 7 Select XBLU3 and press Enter.
- 8 The *PBX Integration Setup Screen* will display (as shown in Figure 1).
- 9 Using the arrow keys navigate down to **9MMM** (*SilentRcd*) and press F4 (delete).
- 10 Type **9XMMM** (space) **R** and press Enter. Press Escape twice to return to the Programming Main Menu.

11 Type Exit and press Enter.

**Figure 1 PBX Integration Selection Screen**



**Xplus100 KSU PROGRAMMING:**

Database programming can be done from any digital display telephone.

*steps:*

1. Press the [ FEATURE] # \*
2. Enter the database password (default:00000000)
3. Press the middle soft button labeled *show*
4. The initial display is blank, which is the Menu Bypass Code (MBC) Entry screen.
5. Enter 02- LN-09 (LN = Line Number) and press the middle soft button labeled *save*.
6. Press the third soft button labeled *chg* to set the CALL ABANDON to Y  
[END]